



South Park
Lincoln

MOUNT & MINSTER

South Park

Lincoln

- Well Presented Town House
- Overlooking South Common
- Brand New Kitchen
- Redecorated throughout
- 3 Bedrooms
- Good Sized Garden and Roof Terrace
- Viewing Advised

INTRODUCTION

A stunning executive home with accommodation over three floors. Highlights include an all weather terrace, fabulous fitted kitchen, dining room with double french doors to the garden. First floor sitting room with double french doors to terrace. Three bedrooms and bathroom on the second floor.

LOCATION

Situated approximately 1.8 miles from Lincoln's City centre, this property combines the benefit of being near to the city centre and key commuter routes, with a taste of countryside living due to standing in a location opposite the scenic South Common area of Lincoln. The city can be easily reached by car or on foot in a matter of minutes, while the common provides ample space to enjoy open countryside with wonderful views of the Cathedral and City. The A15 to the north and south of the city is a stone throw away, while the property also enjoys good road links to the A46 and the Lincoln bypass. The rail station can be reached on foot and provides regular services to Newark which itself provides services to London and the north on the East Coast Mainline. There are several good schools in the vicinity, as well as sixth form colleges and two universities.

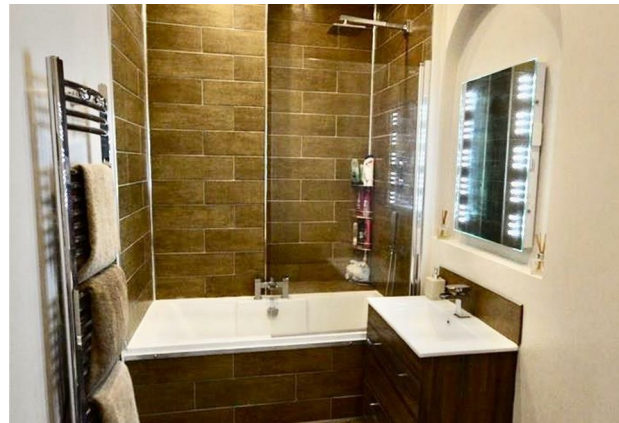
ACCOMMODATION

Kitchen

4.87 x 3.23 (15'11" x 10'7")

Bespoke fitted kitchen featuring solid wood countertops, two stainless steel circular sinks, integrated dishwasher, halogen 4 ring hob, electric oven, recessed extractor fan, tiles splash backs and floor, floor level mood lighting, recessed spotlights, under unit heater and wine storage. A built in cupboard houses the gas combo boiler and provides space and plumbing for a washing machine.





Dining Room

5.43 x 3.25 (17'9" x 10'7")

Opening out from the kitchen the dining room has hardwood laminate flooring, porthole style windows, double glazed french doors leading out to the patio and garden, recessed spotlights.

First Floor Landing

Double reception room

3.77 x 8.31 (max) (12'4" x 27'3" (max))

Hardwood laminated floor, feature fireplace and quartz tiled wall, double glazed windows in a bay with venetian blinds, coving, ceiling rose, built in storage cupboard, double french doors leading out to roof terrace.

WC

WC, corner sink and storage unit, extractor.

Roof Terrace

Great entertaining space with wall lights, all weather non slip surface and contemporary glass and steel railings.

Second Floor

Bathroom

2.99 x 1.56 (9'9" x 5'1")

Luxury bathroom with tiled walls and splash backs, fitted bath with inset mood lighting and shower above with glass shower screen, demisting mirror with led lights, hand basin with vanity unit, WC, recessed spotlights.

Bedroom One

Carpeted, double glazed windows with venetian blinds, coving, views of South Common.

Bedroom Two

4.6 x 2.48 (15'1" x 8'1")

Carpeted, double glazed windows, one with venetian blind, one with privacy glass, to front and rear aspect.

Bedroom Three

3.10 x 1.68 (10'2" x 5'6")

Carpeted, double glazed window with venetian blind to rear aspect, spotlights.

Services

Mains Gas, Water, Electricity and Drainage.

ENERGY PERFORMANCE CERTIFICATE

EPC Rating: E

COUNCIL TAX BAND

Council Tax Band: B

VIEWINGS

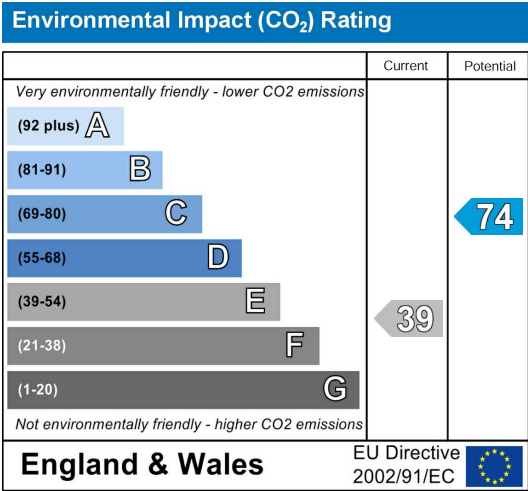
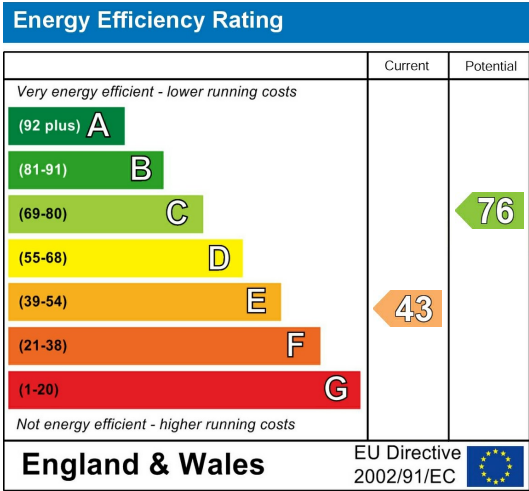
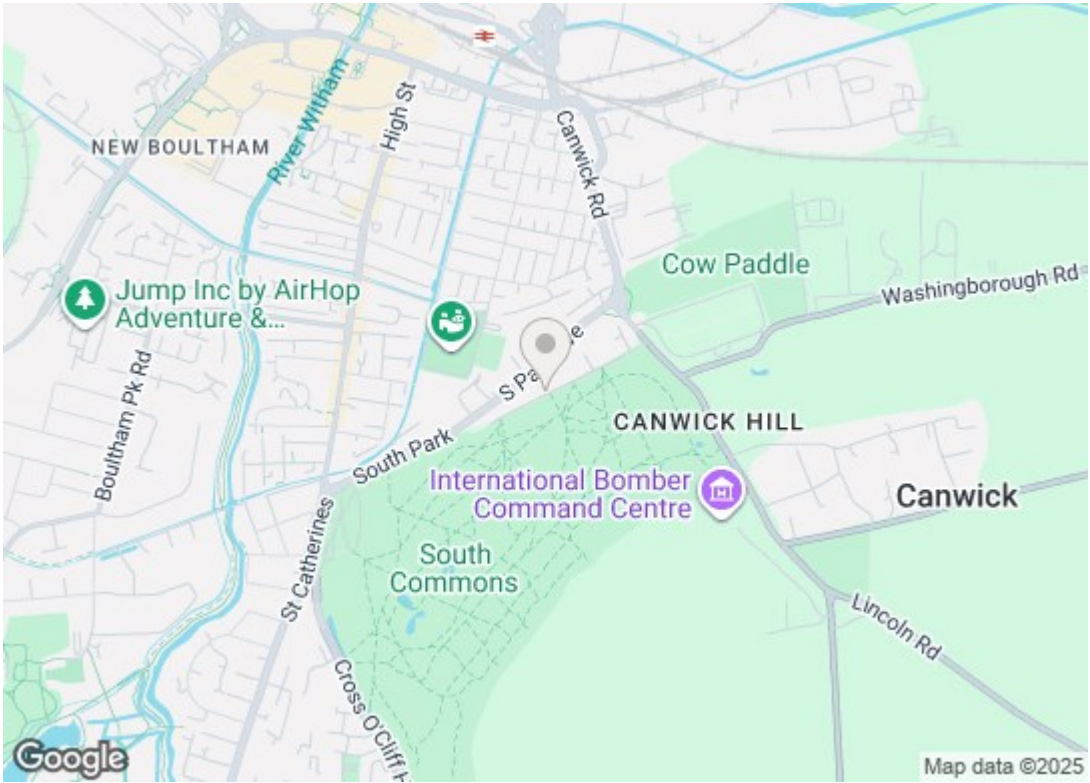
By prior arrangement with the Sole Agents (01522 716204).

ADDITIONAL INFORMATION

For further details, please contact Daniel Baines at Mount & Minster:

T: 01522 716204

E: daniel@mountandminster.co.uk



Mount & Minster endeavour to provide accurate particulars, however they should not be relied upon as statements of fact. All the information provided should be verified by yourselves or your advisers. These particulars do not constitute any part of an offer or contract. Our staff have no authority to make or give any representation or warranty whatsoever in respect of the property. The services, fittings and appliances have not been tested and no warranty can be given as to their condition. Photographs may have been taken with a wide angle lens. Plans are for identification purposes only, are not to scale and do not constitute any part of the contract. Mount & Minster is the trading name of Mount & Minster LLP. Registered Office: Atton Place 32 Eastgate, Lincoln, LN2 1QA. Registered in England and Wales. Registration Number: OC398777

Atton Place, 32 Eastgate, Lincoln,
Lincolnshire, LN2 1QA
Tel: 01522 716204
Email: info@mountandminster.co.uk

